



INVICTUS NEXT-GEN[®]

Genesee's Drosophila Incubators Have Evolved.



DIRECT DROSOPHILA TECHNICAL SUPPORT: 800.789.5550 x 3597 (FLYS) • INT'L PHONE: +1.858.536.8044 • WEB: www.flystuff.com

INVICTUS NEXT-GEN® Thermoelectric Advantages

Thermoelectric (Peltier) cooling technology is the most advanced and reliable cooling technology currently available, and we've applied it to our new INVICTUS NEXT-GEN Drosophila incubators. With multiple, independent thermoelectric cooling units, your chamber will be able to maintain temperature even if it suffers multiple failures, which is unmatched by any refrigeration-based chamber.



All INVICTUS NEXT-GEN incubators are backed by the best warranty in the industry, which includes a 7 year warranty on the thermoelectric cooling block, 2 year warranty on all parts and 1 year warranty covering all parts and labor.



No Technician Needed

Engineered so that if the cooling block does fail, it can easily be replaced with simple hand tools



Extremely Quiet

Ideal for all laboratory workspaces. Fans are the only moving parts and are designed to be no louder than computer fans



Long Life Expectancy

Peltier cooling devices are never run at full capacity, so the MTBF (mean time before failure) is well over 20 years



Energy Efficient

Thermoelectric cooling utilizes 33% less energy than compressor cooled models



Resistant to Corrosion

The thermoelectric cooling block is impenetrable to the acidic environment caused by Drosophila

INVICTUS NEXT-GEN® Exquisite Design

Heavy-Duty Exteriors

Single door models feature an exterior made of heavy-duty steel powder coated blue or off-white. Double door models have a natural stainless steel front and brushed aluminum sides.

Corrosion Resistant Interiors

Single door models have interiors made of corrosion resistant 304 stainless steel. Double door models have aluminum walls and stainless steel floors and ceilings.

Fail-Safe Protection

Supplied with a shutdown capability that activates when temperatures reach the set failsafe. This safety feature helps prevent your flies from freezing or overheating in the unlikely event of a malfunction.

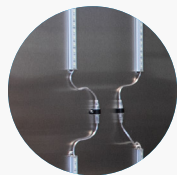
Self-Servicing

Thoughtfully engineered so that virtually every part on the chamber can be "plug-n-play" self-serviced with basic hand tools, including the thermoelectric cooling system. To you, this means no more expensive repair bills and less downtime in the event of a malfunction.

Optimal Shelving

Includes stainless steel shelves that can hold up to 150lbs each. We supply the maximum number of shelves that leave 2 inches of clearance between vials or bottles and the next shelf. Each shelf can hold 4 trays of any combination of narrow vials, wide vials, or bottle trays.

Customization and Add-On Options



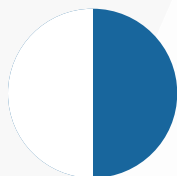
Glass Door and LED Lighting

Every INVICTUS NEXT-GEN model is available with either a solid steel door or transparent glass door option. All solid door models include timed LED light strips installed on the interior side of the door. Glass door models do not include timed LED light strips, however you can customize your glass door model to include this feature for an additional fee.



Ultrasonic Humidifier

The optional ultrasonic humidification system provides excellent, uniform humidity control, which can save you 93% on operating costs from reduced energy consumption and less heat output into the surrounding room. This system must be connected to a Type 3 water source (filters are available if needed). For ventilation, a compressed air connection is standard on all incubators. This must be utilized during operation to allow chamber humidity to lower from higher set points. Simply order the catalog number ending in "H" for this add-on.



Exterior Color

All single door models are powder coated INVICTUS blue as standard, but we can customize any single door model to be powder coated off-white for an additional fee. Double door models are not powder coated and come standard with stainless steel fronts and aluminum side walls. Please reach out to us for more information on how to purchase this option.

INSTALLATION ADD-ON OPTION

INVICTUS NEXT-GEN incubators are manufactured for Genesee Scientific exclusively by Darwin Chambers. If you would like professional installation by an expert technician, you may add this service to your order at the time of purchase.

This service includes uncrating, final placement of the chamber, basic installation and start-up, and complete owner training from the technician. You'll learn about all of the features and how to expertly operate and maintain your new incubator.

This installation service is different from white glove service. The technician is not guaranteed to arrive on the same day as your new incubator and the installation price does not include freight or delivery charges.

To purchase this professional installation package, please reach out to us for a quote.

INVICTUS NEXT-GEN® Touchscreen Control

The most advanced controller on the market for *Drosophila* incubators. Every model of INVICTUS NEXT-GEN incubators feature upgraded IDEC H1G1 touchscreen controllers. These controllers are fully programmable with the option to program the incubator to **automatically change temperature or humidity at 24 set time intervals**. They also have a built in alarm system that connects to Wi-Fi to notify you via email and text message if there is an issue with your incubator.



INVICTUS Exclusive Mite Cycle Mode runs a pre-programmed decontamination cycle at 50°C for a minimum of two hours



Built-in alarm system has the ability to set up 3 different alarms for different conditions and takes you to the **Alarm Screen**. Alerts via text and email



Email notifications can be set up for multiple email addresses to send alerts when the alarm is set off



Feedback settings allow for control over how the incubator alerts when an alarm is triggered



Network settings to connect the incubator to the internet allowing text and email alarm notifications



Control for date and time settings

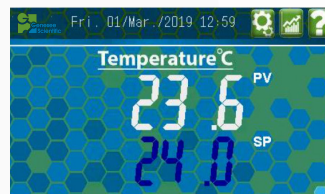


Many more fly products available at: www.flystuff.com

**Wi-Fi Enabled
Touchscreen Controller
with Pre-Programmed
Mite Cycle Mode**



Home Screen



Alarm Screen

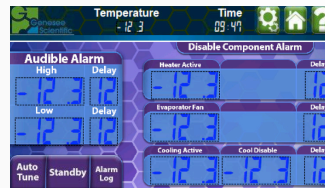
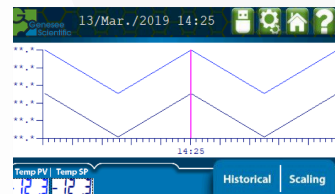
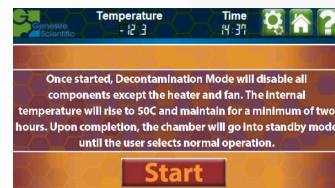


Chart Screen



Mite Cycle Screen



INVICTUS NEXT-GEN® 12 ft³ Benchtop Model

Thermoelectric Technology

Touchscreen Control



* Glass Door Option

Lighting on
Inside Panel



CAPACITY

12 ft³

SHELVING

4 shelves included - each shelf fits 4 trays of any combination of narrow vials, wide vials or bottle trays

TEMPERATURE RANGE

14°C to 50°C

EXTERIOR DIMENSIONS

34.5" W x 28.25" D x 44" H

INTERIOR DIMENSIONS

29.75" W x 23" D x 29.75" H

Cat #	Description	Door Type	List Price
59-800T	INVICTUS NEXT-GEN 12 ft ³ Glass Door	Glass, Hinged on Left Side	18,146.75
59-800TL	INVICTUS NEXT-GEN 12 ft ³ with Lighting	Solid, Hinged on Left Side	18,091.30
59-800TLH	INVICTUS NEXT-GEN 12 ft ³ with Lighting and Humidity Control	Solid, Hinged on Left Side	21,640.15

INVICTUS NEXT-GEN® 32 ft³ Single Door Model

Thermoelectric Technology

Touchscreen Control



Cat #	Description	Door Type	List Price
59-807T	INVICTUS NEXT-GEN 32 ft³ Glass Door	Glass, Hinged on Left Side	21,883.20
59-807TL	INVICTUS NEXT-GEN 32 ft³ with Lighting	Solid, Hinged on Left Side	21,665.10
59-807TLH	INVICTUS NEXT-GEN 32 ft³ with Lighting and Humidity Control	Solid, Hinged on Left Side	25,213.90

CAPACITY

32 ft³

SHELVING

9 shelves included - each shelf fits 4 trays of any combination of narrow vials, wide vials or bottle trays

TEMPERATURE RANGE

18°C to 60°C

EXTERIOR DIMENSIONS

34"W x 35" D x 80.5" H

INTERIOR DIMENSIONS

29.5"W x 29.75" D x 58.25" H



Many more fly products available at: www.flystuff.com

INVICTUS NEXT-GEN® 47ft³ Double Door Model

Thermoelectric Technology

Touchscreen Control



18 Shelves Included

Cat #	Description	Door Type	List Price
59-808T	INVICTUS NEXT-GEN 47 ft³ Glass Door	Glass	31,024.10
59-808TL	INVICTUS NEXT-GEN 47 ft³ with Lighting	Solid	30,715.80
59-808TLH	INVICTUS NEXT-GEN 47 ft³ with Lighting and Humidity Control	Solid	34,264.60

CAPACITY

47 ft³

SHELVING

18 shelves included - each shelf fits 4 trays of any combination of narrow vials, wide vials or bottle trays

TEMPERATURE RANGE

18°C to 50°C

EXTERIOR DIMENSIONS

52.88"W x 35.81" D x 80.5" H

INTERIOR DIMENSIONS

47.5"W x 29"D x 58.5" H

Compare INVICTUS NEXT-GEN® Models

Thermoelectric Models



12 ft³ Mini

Available in
White or Blue



32 ft³ Single Door



47 ft³ Double Door

Temperature Range	14°C to 50°C	14°C to 50°C	18°C to 27°C
Temperature Control	± 0.2°C		
Humidity Range (LH Models Only)	Ambient to 90% @ 40°C dewpoint		
Exterior	Glass door on Cat #59-800T models. 18 gauge powder-coated galvanized steel door, front, and sides	Glass door on Cat #59-807T models. 18 gauge powder-coated galvanized steel door, front, and sides	Glass door on Cat #59-808T models. stainless steel 300 series on front, door and brushed aluminum finish sides
Interior	20 gauge 304 grade stainless steel liner, top, bottom, back and sides	20 gauge 304 grade stainless steel liner, top, bottom, back and sides	Coated aluminum side walls, back, door liner, and stainless steel floor and ceiling
Shelving	4 shelves included	9 shelves included	18 shelves included
Shelf Dimensions	21.5"W x 26.25" D	28.75"W x 26" D	21.5"W x 26.25" D
Controller	IDEC H1G1 Wi-Fi enabled touchscreen controllers		
Energy Consumption	Cooling requires 33% less energy than compressor cooling leading to hundreds or even thousands of dollars saved in energy consumption per year		

INVICTUS® Compressor Model Incubators

E-Coated Evaporator Coil

Watlow Digital Controller



Cat #59-400



Cat #59-407



Cat #59-408



Fits 4 standard narrow or wide vial trays per shelf (Narrow: Cat #59-400; Wide: Cat #59-407 and Cat #59-408)

Cat #	Description	Door Type	Temp. Control	# of Shelves	List Price
59-400	INVICTUS Drosophila Incubator	Glass, Hinged on Right Side	5 – 60°C	6	9,708.35
59-400L	INVICTUS Drosophila Incubator with Lighting	Solid, Hinged on Right Side	5 – 60°C	6	10,643.10
59-407	INVICTUS Drosophila Incubator	Glass, Hinged on Right Side	5 – 60°C	6	11,349.45
59-407L	INVICTUS Drosophila Incubator with Lighting	Solid, Hinged on Right Side	5 – 60°C	6	12,183.25
59-408	INVICTUS Drosophila Incubator	Glass, Double Door Hinged on Right and Left Sides	5 – 60°C	12	12,690.25
59-408L	INVICTUS Drosophila Incubator with Lighting	Solid, Double Door Hinged on Right and Left Sides	5 – 60°C	12	13,692.70

Which INVICTUS® is Right for You?

INVICTUS NEXT-GEN® Thermoelectric Incubators

vs.

INVICTUS® Compressor Cooled Incubators

Cooling block completely resistant to corrosion from acidic Drosophila environment, meaning the longest lifespan available

LIFESPAN

E-Coated evaporator coil helps prevent coolant leaks significantly better than a phenolic coated coil

Can cool 12-14°C from ambient room temperature

COOLING POWER

Ability to cool and recover temperatures from any ambient room temperature

Engineered so that virtually every part is replaceable with simple hand tools. So no need for a refrigeration technician

MAINTENANCE

Uses coolant in cooling system, so a refrigerator repair technician is required if there is an issue

Thermoelectric cooling requires 33% less energy than compressor cooled incubators

ENERGY CONSUMPTION

Smart compressor only turns on when necessary, meaning it uses less energy than units with continuously running compressors

Fully programmable Wi-Fi enabled touchscreen controller with built in alarm that sends alerts via text message and email

CONTROLLER

Simple watlow digital controller. Alarm not included

7 years on TE cooling block, 2 years all parts, 1 year all parts and labor

WARRANTY

Lifetime warranty on evaporator coil part, 5 year warranty on compressor part, 1 year all parts and labor

Ultrasonic humidification system available as an option for additive humidity

HUMIDITY

Humidity is not an option for these models. Additive humidity causes acidic water to sit on the coils and corrode them faster

Variable cooling strength of solid-state blocks allows for more conformity throughout the chamber

TEMPERATURE CONFORMITY

“On/Off” mechanism of compressor means slightly less conformity throughout the chamber

Extremely quiet and operates no louder than a computer fan

NOISE LEVEL

Compressor turns on only when necessary, greatly reducing noise compared to constantly running compressors



One-Stop Shop for Drosophila Research



VIALS



BOTTLES



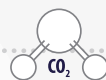
CLOSURES



FOOD



FILLERS



ANESTHESIA



INCUBATORS



MICROSCOPY



CAGES



MITE CONTROL



DIRECT DROSOPHILA TECHNICAL SUPPORT: 800.789.5550 x 3597 (FLYS) • INT'L PHONE: +1.858.536.8044 • WEB: www.flystuff.com